

WEIGHT AND GROUND BEARING PRESSURE

Standard machine with bucket, operator, full capacity lubes and fuel

	JS205	JS205LC
Operating Weight	20,500 kg	21,250 kg
Ground bearing pressure	0.61 kg/sq cm	0.58 kg/sq cm

STATIC DIMENSIONS		JS205LC (LC track, 500 mm track shoe)		JS205 (Std track, 500 mm track shoe)	
		2.4m arm	3 m arm	2.4m arm	3 m arm
A	Track length on ground	3660	3660	3370	3370
B	Undercarriage overall length	4460	4460	4170	4170
C	Track gauge	2390	2390	2200	2200
D	Width over tracks	2890	2890	2700	2700
E	Transport length with Monoboom and arm	9634	9562	9634	9562
F	Transport height with Monoboom and dipper	3122	3122	3122	3122
G	Counterweight clearance	1079	1079	1079	1079
H	Tailswing radius	2825	2825	2825	2825
I	Width of superstructure	2549	2549	2549	2549
J	Height over cab	3060	3060	3060	3060
L	Ground Clearance	435	435	435	435
M	Track Height	885	885	885	885

ENGINE

Model	: CUMMINS 6BT 5.9C
Type	: Water Cooled, 4 stroke, 6 -cylinder in-line, direct injection, turbo-charged diesel.
Gross Power	: 140 hp
Piston Displacement	: 5.88 litres.
Air filtration	: Dry element with secondary safety element plus air pre-cleaner
Cooling	: Water cooler via large capacity radiator with anti block 'wavy' fins.
Starting system	: 24 volt.
Alternator	: 24V,75 amp, Heavy duty

SERVICE CAPACITIES

Fuel tank	343
Engine coolant	25.5
Engine oil	19
Hydraulic System	203
Hydraulic tank	120
Swing Device	5
Travel Device	2 x 5

CAB + CAB GUARD

Pressed steel construction with high strength rolled sections. Excellent all round visibility during digging, loading & positioning. Removable front lower glass and sliding rear window. Excellent ergonomic positioning of operating levers for reduced operator fatigue. Optional ducted AC unit with heater for operator comfort. Windscreen wiper, FM radio with USB media player with speakers, mobile phone charging point & lockable stowage available. Rubber covered track pedal, water bottle & document holders provided. Optional cab guards for cab front & top available for protection against flying objects. Additional cab top lights for illumination.

* All dimensions, weights and timings are variable within 1.5% JCB reserves the right to change specifications without prior notice.



EXCAVATOR BUCKET

All buckets are JCB type fully welded steel, with sealed, hardened steel pivot pins and replaceable wear parts.

Bucket	Toe plate width (mm)
0.9 cum (GP)	1198
0.9cum (HD)	1198
1.02cum (GP)	1350
0.8cum (Rock)	1120

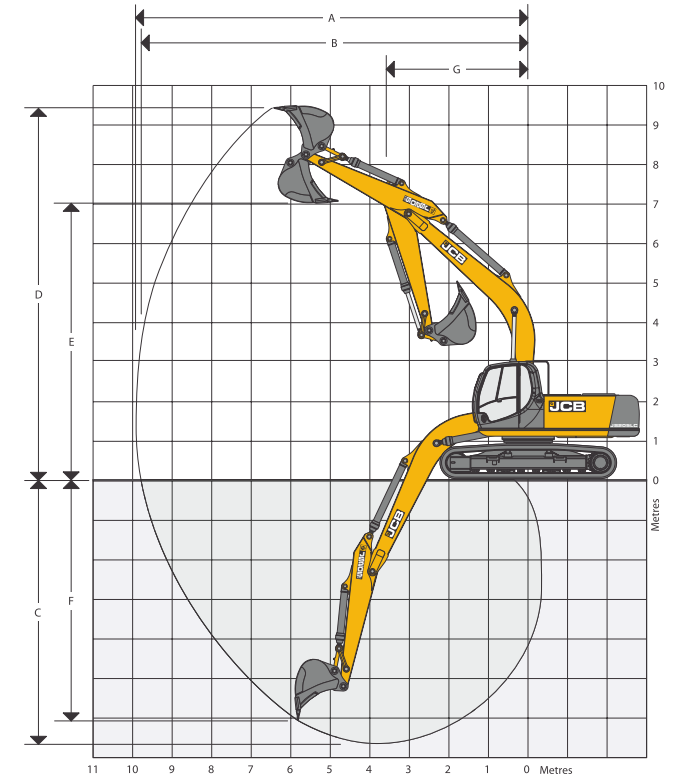
TRAVEL SPEED & TRACTIVE EFFORT

Travel speed	3.8 kmph
Tractive Force	166 KN

WORKING RANGE: JS205LC/JS205



Boom Length 5.7m	Arm length	
Dipper	unit	2.40m 3.00m
A Maximum digging reach	m	9.30 9.79 m
B Maximum digging reach (on ground)	m	9.10 9.61
C Maximum digging depth	m	5.98 6.59
D Maximum digging height	m	9.03 9.12
E Maximum dumping height	m	6.46 6.57
F Maximum vertical wall cut depth	m	5.47 6.14
G Minimum swing radius	m	3.85 3.74
Bucket rotation	deg.	183 182
Dipper tearout (ISO6015)	kgf	11700 9842
Bucket tearout (ISO6015)	kgf	13205 13205



* All dimensions, weights and timings are variable within 1.5% JCB reserves the right to change specifications without prior notice.



SWING SYSTEM

Swing motor	: Axial piston type
Swing brake	: Hydraulic braking, electrically operated spring applied disc type parking brake.
Final drive	: Planetary reduction
Swing torque	: 65.2 kNm:
Swing gear	: Large diameter, internally toothed fully sealed grease bath lubricated.
Swing speed	: 12 RPM.

HYDRAULIC SYSTEM

A variable flow load sensing system with flow on demand, variable power output and servo operated, multi-function open centre control.

2 Work modes: Productivity & Economy

Pumps

Main pumps	: 2 variable displacement axial piston type.
Maximum flow	: 2x220 L/min.
Servo pump	: Gear type
Maximum flow	: 20 L/min

Control valve

A combined four and five spool control valve with auxiliary service spool as standard. When required twin pump flow is combined to boom, dipper and bucket services for greater speed and efficiency.

Relief valve settings

Boom/ Arm/ Bucket	343 bar
Swing circuit	289 bar
Travel circuit	343 bar
Pilot control	40 bar

CONTROLS

Excavator : All servo lever operated to ISO control pattern.

Engine Auto-Idler : Reduces engine speed to low idle depending upon machine utilisation thus saving fuel.

Tracks : Individually servo operated by foot pedal or hand lever.

Auxiliary : Via servo operated foot pedal.

Horn : Operated via servo lever mounted button.

UNDERCARRIAGE

Construction: Standard/Long undercarriage fully welded. "X" frame type with central belly guarding and sloping sidemembers with dirt relief holes under top rollers.

Track Shoe	: 500mm (Standard)
Upper & lower rollers	: Heat treated, sealed and lubricated.
Track adjustment	: Grease cylinder type.
Track idler	: Sealed and lubricated, with spring enhanced recoil.
No. of track guides	: 2 per side
No. of lower rollers	: 8 Per side (JS205LC), 7 per side (JS205)
No. of upper rollers	: 2 per side (JS205LC)
No. of track shoes	: 49 per side (JS205LC), 46 per side (JS205)

STANDARD / OPTIONAL EQUIPMENT

Equipment	Standard/Optional
Auto-Idler	Standard
Work lights: 1 each on boom and main frame	Standard
Additional lights; 2 nos. on cab & 1 no. on Counterweight	Standard
Windscreen wiper	Standard
Engine Fan Guard	Standard
Undercarriage belly guarding	Standard
Upper structure under covers	Standard
Engine pre-cleaner	Standard
Double element radial type air cleaner with wire mesh protection	Standard
Heavy-duty alternator (75 amp)	Standard
Cabin Fan	Standard
Suspension Seat	Standard
Cab floor Mat	Standard
Rubber covered track pedals	Standard
Removable front lower cab glass	Standard
Hammer pipe mounting brackets	Standard
Tool Kit	Standard
Handrail and nonslip walk ways	Standard
Radiator fly screen	Standard
FM Radio and USB music player with speakers	Optional
Fully ducted air conditioner unit with heater	Optional
Cabin Guard (Front and Top)	Optional
Rock breaker	Optional
Rock breaker pipe Work	Optional
General purpose buckets (0.9 cum, 1.02 cum)	Optional
Heavy-Duty Buckets (0.8 cum, 0.9 cum)	Optional
First aid kit	Optional
Fire Extinguisher	Optional
High raise cabin	Optional
Long reach attachment (15m)	Optional
Cab sun screen	Optional
3 m arm	Optional



TRACK DRIVE

Type	: Fully hydrostatic
Travel motors	: Axial piston type, fully guarded within undercarriage frame.
Final Drive	: Planetary reduction, bolt-on sprockets
Service brake	: Hydraulic counter balance valve to prevent over speeding on gradients.
Park brake	: Disc type, spring applied, automatic hydraulic release.
Gradeability	: 70% (35 deg.) continuous
Travel Speed	: 3.8 kmph
Tractive effort	: 166 kN

EXCAVATOR END

Deep section design of boom & am with cast ends & pivot bosses with braker pipe mounting provision

FILTRATION SYSTEM

The hydraulic components are protected by the highest standard of filtration to ensure long hydraulic fluid life upto 5000 hrs (subject to SOS & recommended maintenance practices) and component life.

In tank : 150 micron, suction strainer.

Main return line : 10 micron, fibre form element.

Plexus Bypass line : 1.5 micron, paper element.

Pilot line : 10 micron, paper element.

Hydraulic hammer return : 10 micron, reinforced microform element.

Cooling

Worldwide cooling is provided via a full return line air blast cooler with anti-block wavy cooling fins. Fly mesh provided to avoid clogging of radiator and cooler films.



LIFT CAPACITIES

Reach	3 m		4.5 m		6.0 m		7.5 m		Capacity at Max. Reach	
Load Point Height										

JS205LC LIFT CAPACITIES : Arm 2.4m, Tracks : 49 Links, Track Shoes : 500mm, without bucket

Reach	3m		4.5m		6m		7.5m		Max. Reach		Max. Reach
Load Point Ht.	Kg	Kg	Kg	Kg	Kg	Kg	Kg	Kg	Kg	Kg	mm
7.5m									5248*	5248*	5577
6m					6046*	4866			4840*	3951	6782
4.5m			7624*	7329	6573*	4708	4786*	3295	4760*	3292	7504
3-0m			9624*	6765	7143	4472	5055	3213	4680	2975	7876
1.5m			10868	6316	6892	4250	4944	3112	4536	2862	7950
0m			10621	6111	6730	4107	4870	3045	4666	2925	7735
-1.5m	10531*	10531*	10585	6081	6681	4064			5155	3211	7202
-3.0m	14788*	12032	10705	6181	6774	4146			6365	3926	6273
-4.5m			7952*	6485					7449*	6087	4711

JS205LC LIFT CAPACITIES : Arm 3m, Tracks : 49 Links, Track Shoes : 500mm, without bucket

Reach	3m		4.5m		6m		7.5m		Max. Reach		Max. Reach
Load Point Ht.	Kg	Kg	Kg	Kg	Kg	Kg	Kg	Kg	Kg	Kg	mm
7.5m									4591*	4212	6450
6m							4307*	3238	4240*	3225	7515
4.5m					6036*	4597	5020	3196	4134*	2743	8171
3-0m			8795*	6669	6966	4335	4890	3078	3987	2497	8514
1.5m			10618	6137	6674	4077	4749	2949	3870	2403	8583
0m			10255	5836	6464	3892	4641	2850	3955	2441	8383
-1.5m	9085*	9085*	10137	5738	6368	3807	4602	2815	4294	2639	7896
-3.0m	15226*	11324	10194	5785	6397	3833			5082	3113	7059
-4.5m	13221*	11689	9478*	5990					6975*	4301	5721

JS205 LIFT CAPACITIES : Arm 2.4m, Tracks : 46 Links, Track-Shoes : 500mm, without bucket

Reach	3m		4.5m		6m		7.5m		Max. Reach		Max. Reach
Load Point Ht.	Kg	Kg	Kg	Kg	Kg	Kg	Kg	Kg	Kg	Kg	mm
7.5m									5248*	4855	5577
6m					6046*	4313			4840*	3493	6782
4.5m			7624*	6445	6484	4158	4514	2900	4511	2898	7504
3-0m			9624*	5900	6226	3928	4427	2820	4099	2608	7876
1.5m			9271	5466	5984	3711	4319	2721	3965	2500	7950
0m			9037	5268	5827	3571	4247	2655	4072	2550	7735
-1.5m	10531*	9950	9003	5239	5780	3530			4490	2799	7202
-3.0m	14788*	10142	9117	5335	5870	3610			5527	3423	6273
-4.5m			7952*	5629					7449*	5294	4711

Life capacity front and rear

Life capacity full circle

Notes: • For lifting capacity including bucket, subtract total weight of bucket or bucket and quickhitch from above value • The above loads are in compliance with SAE and ISO standards i.e. 75% of minimum tipping load or 87% of hydraulic lift capacity, whichever is less. Lifting capacities marked * are based on hydraulic capacity